



50-Bottle Dual Zone Wine Cellar

INSTRUCTION MANUAL

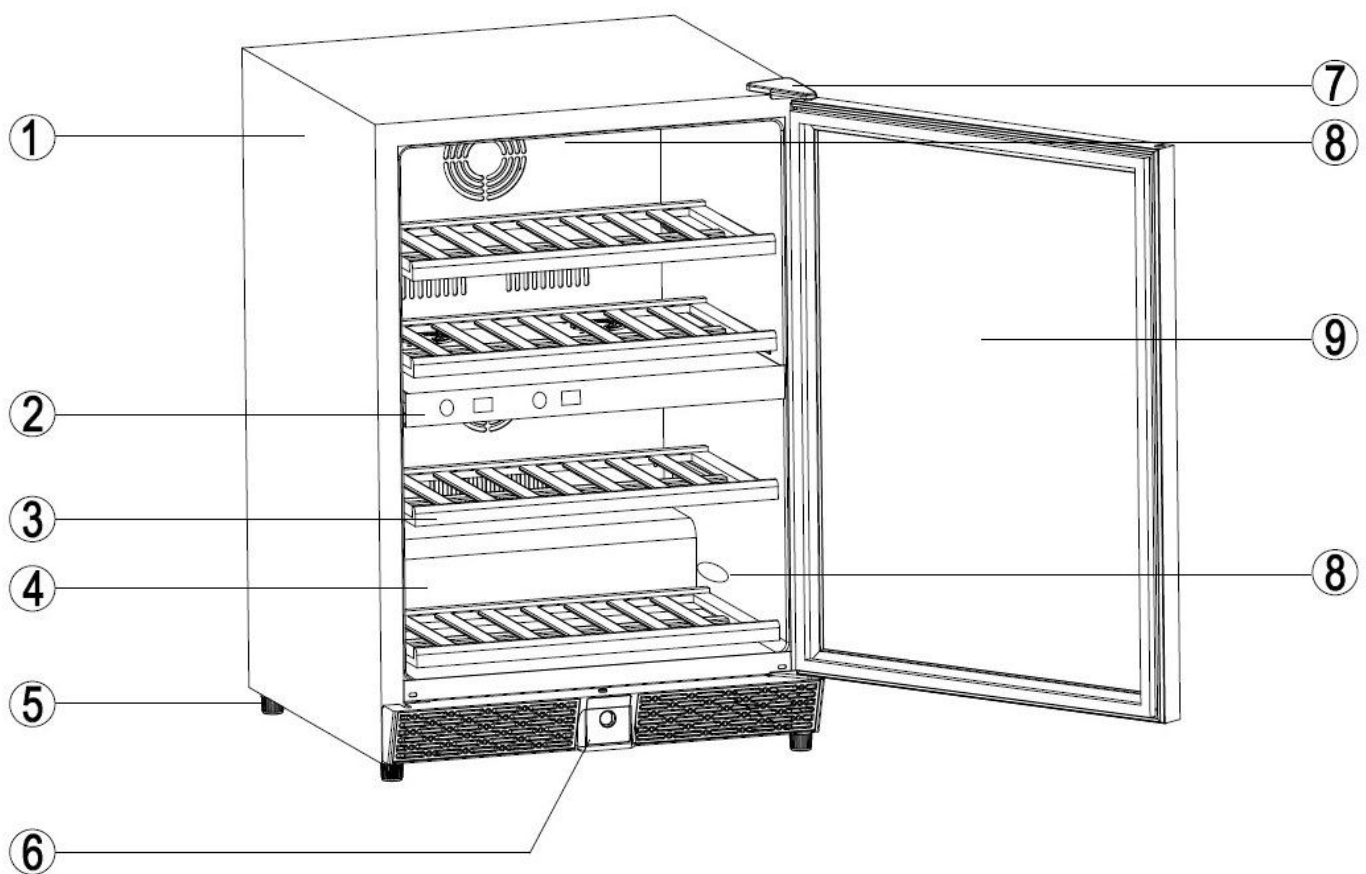
PLEASE READ THIS MANUAL CAREFULLY BEFORE INSTALLING AND OPERATING.

Important Note: Upper zone must be set 4°F colder than lower zone.

TABLE OF CONTENTS

Contents	Page #
Diagram & Description of Wine Cellar	3
Important Safety & Pre-Use Instructions	4
Installation Instructions	
(a) General Installation Instructions	4
(b) Installation of Built-In Unit	5
(c) Reversing Door Swing	6
(d) Installing Venting Grille	7
Operating Your Wine Cellar	7
Temperature Settings	8
Layout & Storage	9
Removing the Rolling Shelf	9
Care & Maintenance	10
Troubleshooting Guide	11
Technical Information	12
Warranty Information	12

DIAGRAM & DESCRIPTION OF WINE CELLAR



- | | |
|---|---------------------|
| 1. Exterior Housing | 6. Front Vent Grill |
| 2. Control Panel and Temperature Settings | 7. Door Hinge |
| 3. Rolling Shelf | 8. Interior Light |
| 4. Inner Cabinet | 9. Door |
| 5. Adjustable Feet | |

YOUR WINE CELLAR ALSO INCLUDES THE FOLLOWING:

- Instruction manual
- 5 rolling shelves
- Two (2) keys
- Top and bottom hinges/screws (for changing the door hinge)

IMPORTANT SAFETY INSTRUCTIONS

WARNING	To reduce the risk of fire, electrical shock, or injury when using your appliance, follow these basic precautions:
<ul style="list-style-type: none">● Read all instructions before using the wine cellar.● DANGER: Risk of child becoming trapped in new cellar, old wine cellar/refrigeration unit, or large boxes. Junked or abandoned appliances, boxes and other containers are still dangerous, even if they will “just sit in the garage for a few days”.● Before you throw away your old wine cellar or refrigeration unit: 1. Take off the door. 2. Leave the shelves in place so that children cannot climb inside.● Never allow children to operate, play with, or crawl inside the appliance.● Never clean appliance parts with flammable fluids. The fumes can create a fire hazard or explosion.● Do not store in the vicinity of any other appliance. Do not store near gasoline or any other flammable vapors. The fumes can create a fire hazard or explosion. <p>-Save these instructions-</p>	

BEFORE USING YOUR WINE CELLAR

- Remove the exterior and interior packaging.
- Before connecting the wine cellar to the power source, let it stand upright for approximately **2** hours. This will reduce the possibility of a malfunction in the cooling system from handling during transportation.
- Clean the interior surface with lukewarm water using a soft cloth.

INSTALLATION INSTRUCTIONS

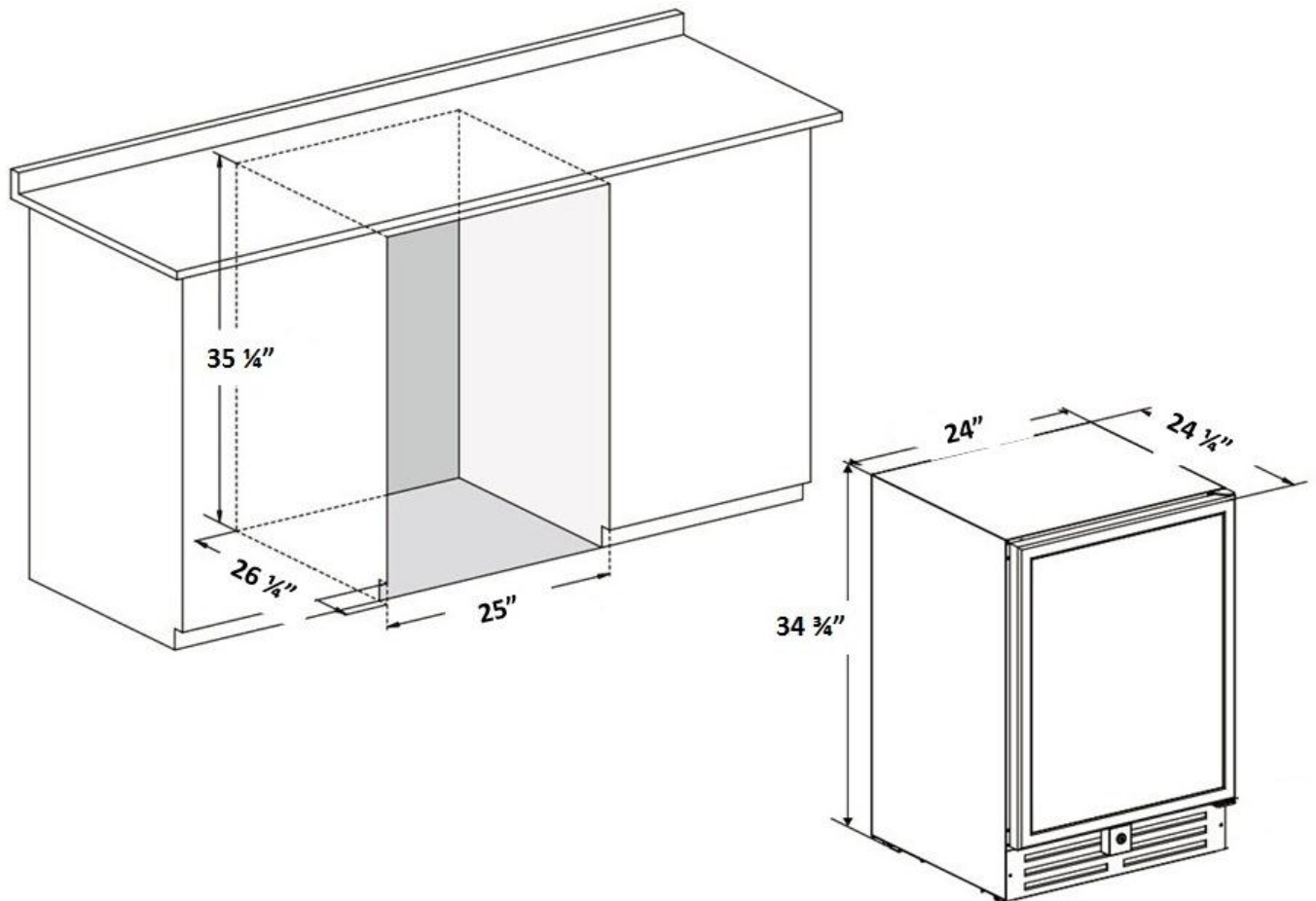
(a) General Installation Instructions

- This appliance is designed for free standing installation. Do not build-in or recess into closed cabinetry.
- Place your wine cellar on a flat, solid floor that is strong enough to support it when it is fully loaded. To level your wine cellar, adjust the front leveling leg at the bottom of the wine cellar.
- When moving your wine cellar, please do not incline it more than 45 degrees.
- Locate the wine cellar away from direct sunlight and sources of heat (stove, heater, radiator, etc.). Direct sunlight may affect the acrylic coating and heat sources may increase electrical consumption. Extreme cold ambient temperatures may also cause the unit to perform improperly.
- Avoid locating the unit in damp areas.
- Plug the wine cellar into a dedicated (for this appliance only), properly installed and grounded wall outlet. Do not under any circumstances cut or remove the third (grounding) prong from the power cord. Any questions concerning power and/or electrical grounding should be directed to a certified electrician or authorized product service center.

(b) Installation of Unit as a Built-In Cellar

The cutout dimension illustrated below allows for door clearance and access to the pull-out shelves when installed as a built-in appliance.

If installing between frameless cabinets, a $\frac{1}{2}$ " wide filler strip or side panel may be needed on hinge side. The filler strip will act as a spacer between the appliance case and adjacent cabinet door swing.



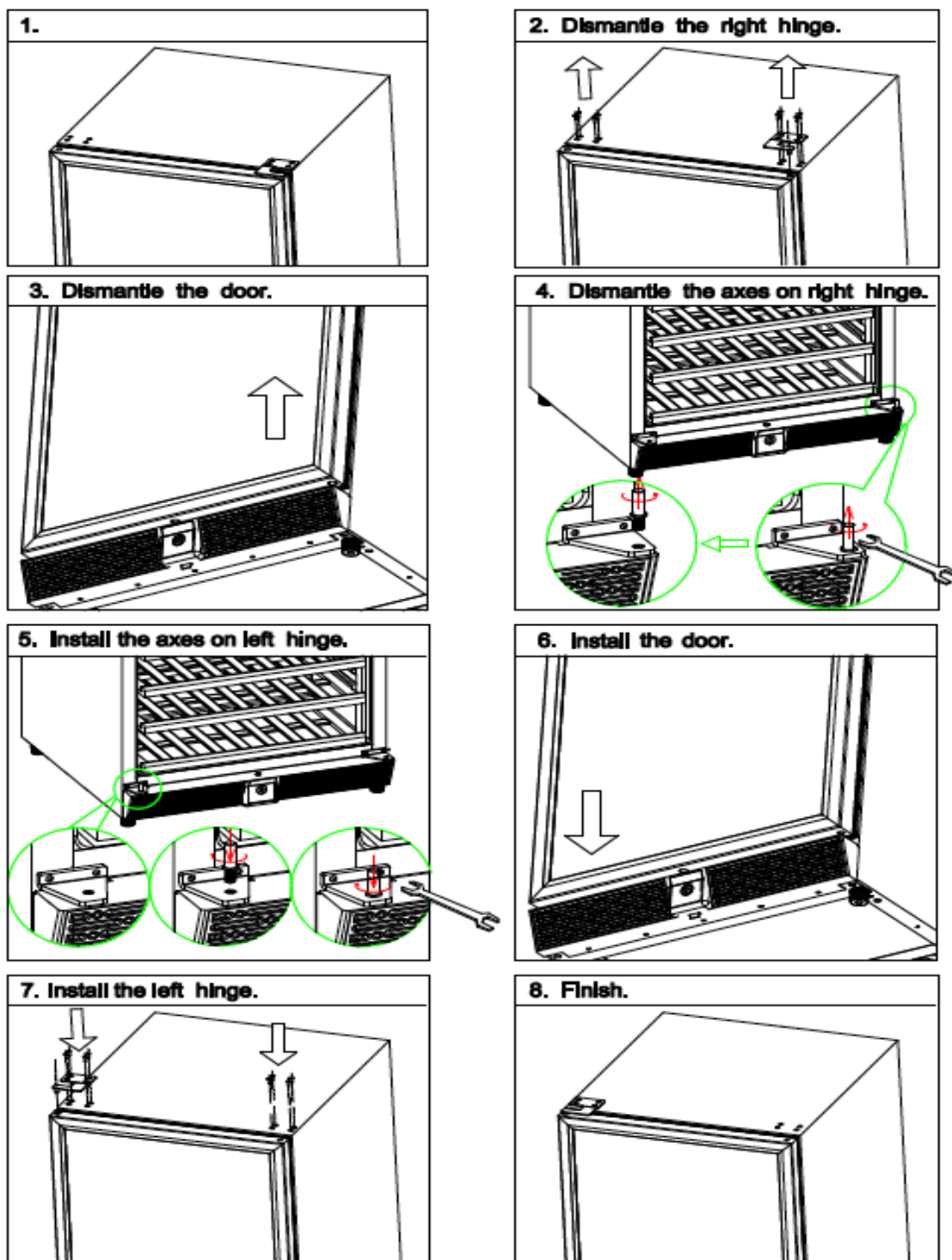
These cut out dimensions show the minimum space required for your wine cellar to perform as designed.

Note: If your cabinets are less than $35 \frac{1}{4}$ " in height, you can remove the leveling legs on the bottom of the wine cabinet to reduce it's height by $\frac{1}{2}$ ". You must use shims to level the cabinet if you remove the leveling legs.

(c) Reversing the Door Swing of Your Appliance

Before you begin: Tape down shelves to avoid movement during the process

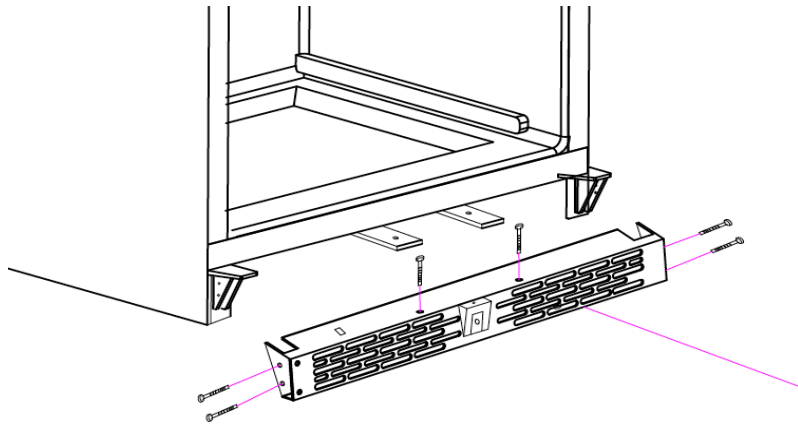
- The unit may have been delivered to you with the door opening from the left side (hinges on the right).
- The door of this appliance can be hung to open on the left or right side. To reverse the door swing of your cooler and open from the opposite side, please follow the instructions and diagram below:
- Locate the extra set of hinges in the plastic bag containing the instruction manual



(d) Installing the Venting Grille

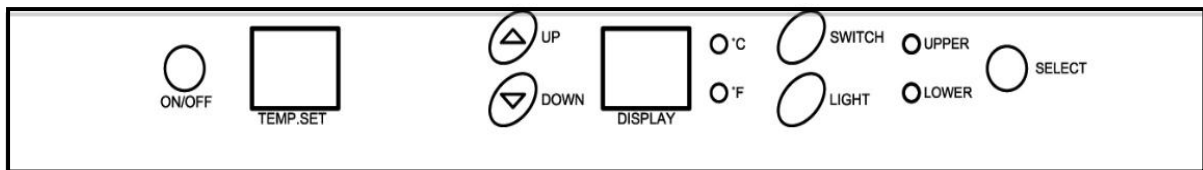
Lift the panel into position in the grille frame over center mounts, positioning side mounts into the slots. Use a Phillips screwdriver to screw all six (6) screws into the corresponding holes.

Note: Each center mount accommodates 1 screw. Each side mount accommodates 2 screws.



OPERATING YOUR WINE CELLAR

Each wine cellar includes an operating panel on the front of the unit. This operating panel includes several features to operate and control the temperature of both the UPPER and LOWER zones of the wine cellar. The operating panel includes the following features:



ON/OFF: Turns the wine cellar system on or off.

UPPER ZONE: Adjusts and displays, via LED, the desired temperature (F) and the actual temperature (F) of the UPPER zone.

LOWER ZONE: Adjusts and displays, via LED, the desired temperature (F) and the actual temperature (F) of the LOWER zone.

LIGHT: Turns the interior wine cellar light on or off.

SELECT: Allows user to select control of the UPPER or LOWER zone.

BEFORE YOU START: The wine cellar should be placed in a location where the ambient temperature is between 60-80 degrees Fahrenheit. If the ambient temperature is above or below this range, the performance of the unit may be affected. For example, placing your unit in extreme cold or hot conditions may cause interior temperatures to fluctuate.

SETTING THE TEMPERATURE CONTROL

NOTE: **TEMP SET** indicates *selected* preferred temperature. **DISPLAY** indicates *current* temperature

IMPORTANT: IN ORDER FOR THIS UNIT TO FUNCTION AT OPTIMUM LEVEL, THE UPPER COMPARTMENT SHOULD BE SET AT LEAST 4-DEGREES (F) COLDER THAN THE LOWER COMPARTMENT.

1. Make sure power cord is connected to a properly grounded outlet.
2. Turn power ON.
3. Press the "SELECT" button to choose the "UPPER" or "LOWER" zone. Each zone is independently controlled.
 - **Upper Zone:** The temperature setting can be adjusted from 41°F to 50°F
 - **Lower Zone:** The temperature setting can be adjusted from 50°F to 64°F
4. Set the desired temperature of the UPPER or LOWER zone pushing the **UP** (▲) or **DOWN** (▼) button.
5. Temperatures increase or decrease 1°F with each push of the **UP** (▲) or **DOWN** (▼) button.
6. **NOTE:** Temperatures may fluctuate depending on whether the interior light is ON or OFF and depending on the position of the bottles.

TEMPERATURE SETTINGS FOR SERVING WINE

1. Although optimal *storage* temperature is generally regarded to be 53-57°F, different varietals of wine require different *service*. The recommended temperature ranges for *serving* different varietals of wine are listed below. Your wine cellar will indicate when you have set the Upper/Lower zones to the below temperature ranges.
 - Red Wines: 60-66°F
 - White Wines 45-52°F
 - Sparkling Wines 40-45°F
2. If you set the LOWER zone between 59 - 64°F, the LED light next to "RED" will light up, indicating that you are within the recommended range for serving Red Wines.
3. If you set the UPPER or LOWER zone between 48 - 58°F, the LED light next to "WHITE" will light up, indicating that you are within the recommended range for serving White Wines.
4. If you set the UPPER zone between 41 - 47°F, the LED light next to "SPARKLING" will light up, indicating that you are within the recommended range for serving Sparkling Wines

NOTE:

- In the event of a power interruption, all previous temperature settings will automatically be saved, and each compartment will return to the previous temperature setting.
- If the unit is unplugged, loses power, or is turned off, you must **wait 3 to 5 minutes before restarting**. Attempting to restart the wine cellar before this time has elapsed may prevent the wine cellar from starting.
- When you use the wine cellar for the first time or restart the wine cellar after having been shut off for a long time, there will be a few degrees variance between the temperature you select and the one indicated on the LED readout for the first few hours of operation. After a few hours of operation, the temperature will normalize to the displayed temperature.

DOOR LOCK

- This unit comes with key lock.
- The keys are located inside the plastic bag that contains the user manual. To unlock the door, insert the key into the lock and turn counterclockwise.
- To lock the door, simply reverse the operation making sure the metal pin is engaged completely. Then remove the key and place it in a secure place for safekeeping.

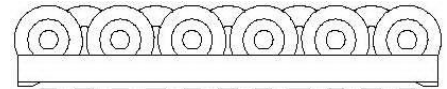
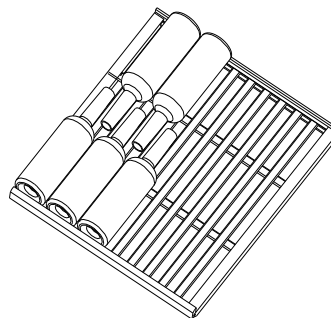
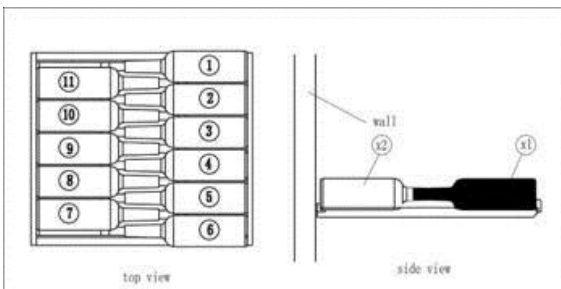
LAYOUT AND STORAGE

Your cabinet was designed to store a maximum number of bottles securely. We recommend that you observe the tips below to optimize loading.

- Remove tape from shelves once unit is stable and ready for storage.
- Disperse the bottles evenly to avoid concentrating weight in one place. Bottles must not touch either the back of the cabinet or the step at the bottom.
- Make sure that the bottles are not all grouped together either at the top or bottom of the cabinet.
- Only pull out one rolling shelf at a time. Never attempt to pull more than one.
- Maximum weight capacity per shelf is 55 lbs.
- Each rolling shelf is designed to comfortably hold one row of 11 bottles as indicated in the diagram below. You can also fit 5 bottles on the bottom of the cabinet itself.

PLEASE NOTE

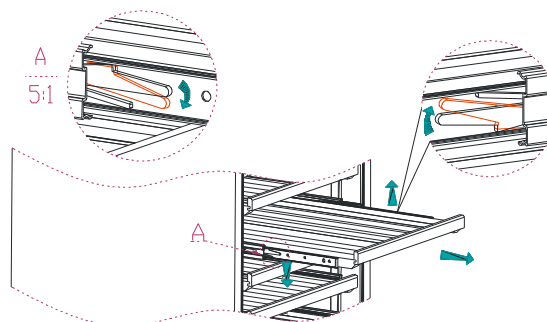
Before modifying your cabinet's original configuration in any way, be sure to ask your dealer for advice.



REMOVING THE ROLLING SHELF

To remove a rolling shelf:

1. Remove all bottles.
2. Pull the shelf out as far as it will go.
3. Push the left side lever downward while pushing the right side lever upwards (as illustrated below).
4. Remove the shelf.



CARE AND MAINTENANCE

Cleaning Your Wine Cellar.

- Turn off the power, unplug the appliance, and remove all items including all shelves.
- Wash the inside surfaces with a solution of warm water and baking soda (approximately 2 tablespoons of baking soda for each quart of water.)
- Wash the shelves with a mild detergent solution.
- Wring excess water out of the sponge or cloth when cleaning area of the controls, or any electrical parts.
- Wash the exterior with warm water and mild liquid detergent. Rinse well and wipe dry with a clean soft cloth.
- Vacuum the front grill and back of the unit twice yearly. Make sure the power is off before cleaning.
- It is recommended to clean the unit completely inside and out once a year to maximize the longevity of the wine cellar.

Power Loss

- Power failures that are corrected within a few hours should not affect the temperature of your appliance if you minimize the number of times the door is opened. If the power is going to be off for a longer period of time, you need to take other measures to protect your contents.
- If the unit is unplugged, loses power, or is turned off, you must **wait 3 to 5 minutes before restarting**. Attempting to restart the wine cellar before this time has elapsed may prevent the wine cellar from starting.

Absence/Vacation

- **Short vacations:** You may leave the wine cellar powered on and unattended for absences of less than three (3) weeks.
- **Long vacations:** If the appliance will not be used for more than three weeks, remove all items and turn off the appliance. Clean and dry the interior thoroughly. To prevent mold growth, leave the door open slightly, blocking it open if necessary.

Moving Your Wine Cellar

- Remove all items.
- Securely tape down all loose items (shelves) inside your appliance.
- Turn the adjustable leg up to the base to avoid damage.
- Tape the door shut.
- Be sure the appliance stays secure in the upright position during transportation. Also protect the outside of the appliance with a blanket or similar item.

Energy saving Tip

- The wine cellar should be located in the coolest area of the room, away from heat producing appliances, and away from direct sunlight.

TROUBLESHOOTING GUIDE

Many common issues with your wine cellar can be solved very easily. Try the troubleshooting tips below should you experience any problems.

PROBLEM	POSSIBLE CAUSE
Wine cellar does not operate.	Not plugged in. The appliance is turned off. The circuit breaker tripped or a fuse has blown out.
Wine cellar is not cold enough.	Check the temperature control setting. External environment may require a higher setting. (e.g. room needs to be air conditioned) The door is opened too often. The door is not closed completely. The door gasket is not sealing properly.
Wine cellar is turning on and off frequently.	The room temperature is hotter than normal. The door is opened too often. The door is not closed completely. The temperature control is not set correctly. The door gasket does not seal properly.
The light does not work.	Not plugged in. The circuit breaker tripped or a fuse has blown. The light bulb has burned out. The light button is "OFF".
Vibrations.	Check to assure that the wine cellar is on a level surface.
The wine cellar seems to make too much noise.	A faint humming noise may come from the flow of the refrigerator, which is normal. As each cycle ends, you may hear gurgling sounds caused by the flow of refrigerator in your wine cellar. Contraction and expansion of the inside walls may cause popping and crackling noises. The wine cellar is not on a level surface.
The door will not close properly.	The wine cellar is not on a level surface. The door was reversed and not properly installed. The gasket is dirty. The shelves are out of position.
The area around the door, top, or side is hot.	Your wine cellar comes with a heating element near the door that keeps frost and condensation off the glass and it's normal for this area to feel warm. It will not affect the temperature inside the wine cellar.

TECHNICAL DATA

277 01 50	50 Bottle N'FINITY Wine Cellar
Accommodation (bottles)	50
Type of cooling	compressor & air-circulated fan cooling
Climate type	N
Electricity protection grade	I
Nominal voltage/Frequency	115V/60HZ
Rated power(W)	140W
Ambient temperature	60-80 degrees Fahrenheit
Temperature range	Upper Zone: 41F - 50F Lower Zone: 50F - 64F
Range of inside cabinet humidity	60%RH
Item weight	113 pounds
Item dimension	24"W x 24 1/4"D x 34 3/4"H

LIMITED WARRANTY

Length of Warranty: This Limited Warranty lasts for one (1) year from date of receipt of purchase of the wine cellar ("Limited Warranty Period"). Extended warranties may be available for an additional cost at the time of purchase or up to the seventh month from date of purchase. These extended warranties would extend this one (1) year limited warranty to two (2), three (3), or five (5) years. Details about our extended protection plans can be found @ wineenthusiast.com.

Who is Protected: This Limited Warranty protects the original purchaser during the Limited Warranty Period, provided that such purchaser can present appropriate proof of original purchase.

What is Covered: This Limited Warranty covers any defects in workmanship or materials in your new wine cellar under normal use.

What is Not Covered: The following are not covered by this Limited Warranty damage due to such things as accident, misuse, abuse, mishandling, neglect, unauthorized repair, failure to properly maintain, acts of God or any other cause beyond the reasonable control of the Wine Enthusiast whether similar or dissimilar to the foregoing.

Purchaser understands and acknowledges that the wine cellar is a wine refrigerator, which houses wine. Purchaser assumes all the risk of using these units, including risk of spoilage, humidity variations, temperature variations, leaks, fires, water damage, mold, mildew, dryness and similar perils that may occur.

What We Will Do: During the Limited Warranty Period, Wine Enthusiast and/or the manufacturer will, at its sole discretion, repair or replace any wine cellar not operating within the manufacturer's specifications. All costs for labor and materials thereto shall be covered during the Limited Warranty Period. If Wine Enthusiast deems the wine cellar is not repairable, Wine Enthusiast will use the value of your original order toward a replacement; provided, however, that the purchaser will be responsible for all shipping and handling costs with respect to the replacement after the initial ninety (90) days after the date of receipt of original purchase. ***After the initial ninety (90) day period after the date of receipt of purchase, purchaser must pay any shipping and handling charges that are incurred in shipping or transporting the wine cellar for service under this Limited Warranty.*** Wine Enthusiast reserves the right to substitute materials of substantially similar quality in the event that identical materials are not available at the time the Limited Warranty services are performed. Wine Enthusiast reserves the right to request that purchaser contact a local refrigeration company to service the wine cellar.

How to get Warranty Service: In the event your wine cellar is not operating within the manufacturer's specifications, during the Warranty Period, contact customer service by email at custserv@WineEnthusiast.net or by phone 800.648.6058.

Limitation of Implied Warranties: All implied warranties, including warranties of merchantability and fitness for a particular purpose, are limited in duration to the length of this Limited Warranty.

Exclusion of Certain Damages: Wine Enthusiast's liability is limited to replacement or repair of the defective wine cellar. Wine Enthusiast shall not be liable for any damages, whether incidental, consequential or otherwise, because of any defective wine cellar.

How State Law Applies: Some states do not allow limitations on how long an implied warranty lasts and/or do not allow the exclusion of incidental or consequential damages, so the above limitations and exclusions may not apply to you.

The Limited Warranty gives you specific legal rights, and you may also have other rights which vary from state to state.