



IMPORTANT  
SAFETY INSTRUCTIONS

When using electrical appliances, especially when children are present, basic safety precautions should always be followed, including the following:

READ ALL INSTRUCTIONS BEFORE USING  
KEEP AWAY FROM WATER

DANGER

As with most electrical appliances, electrical parts are electrically live even when switch is off. To reduce the risk of death by electric shock:

- 1. Always unplug the appliance immediately after using.
- 2. Do not use while bathing.
- 3. Do not place or store appliance where it can fall or be pulled into a tub or sink.
- 4. Do not place in or drop into water or other liquid.
- 5. If appliance falls into water, "unplug it" immediately. Do not reach into the water.

Featherweight 2  
User Guide

Professional Hair Dryer  
Model No. 73820, 73821, 73822,  
73823, 73824, 73825, 73826,  
73827, 73828, 73829

IMPORTANT  
SAFETY INSTRUCTIONS

WARNING

To reduce the risk of burns, electrocution, fire or injury to persons:

- 1. An appliance should never be left unattended when plugged in.
- 2. Close supervision is necessary when this appliance is used on, or near children or individuals with certain disabilities.
- 3. Use this appliance only for its intended use as described in this manual. Do not use attachments not recommended by the manufacturer.
- 4. Never operate this appliance if it has a damaged cord or plug, if it is not working properly, or if it has been dropped, damaged, or dropped into water. Return the appliance to a service center for examination and repair.
- 5. Keep the cord away from heated surfaces. Do not wrap the cord around the appliance.
- 6. Never block the air openings of the appliance or place it on a soft surface, such as a bed or couch, where the air openings may be blocked. Keep the air openings free of lint, hair and the like.
- 7. Never use while sleeping.
- 8. Never drop or insert any object into any opening or hose.
- 9. Do not use outdoors or operate where aerosol (spray) products are being used or where oxygen is being administered.
- 10. Do not use an extension cord with this appliance.
- 11. Do not direct hot air toward eyes or other heat sensitive areas.
- 12. Attachments may be hot during use. Allow them to cool before handling.
- 13. Do not place appliance, while it is operating, on any surface.
- 14. While using the appliance, keep your hair away from the air inlets.
- 15. Do not operate with a voltage converter.

SAVE THESE INSTRUCTIONS



WARNING

- Make sure to remove plug from outlet after use.
- Do not use if plug is loose in the outlet, as there may be risk of fire, electric shock, electrical shortage and burning.

OPERATING  
INSTRUCTIONS

T3 Featherweight 2

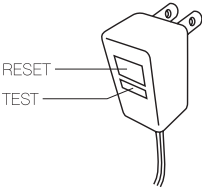
This appliance is intended for household use. Use on Alternate Current (60 Hertz) only.

This appliance has a polarized plug (one blade is wider than the other). As a safety feature, this plug will fit in a polarized outlet only one way. If the plug does not fit fully in the outlet, reverse the plug. If it still does not fit, contact a qualified technician. Do not attempt to defeat this safety feature.

CHECK ALCI EVERY  
TIME YOU USE THIS HAIR DRYER

This hair dryer is equipped with an Appliance Leakage Circuit Interrupter (ALCI), a safety feature that renders it inoperable under some abnormal conditions, such as immersion in water. To make sure the ALCI is functioning properly and the exclusive water sensing system (ALCI) is working, perform the following test:

- 1. Plug in hair dryer and press test button on plug.
- 2. Hair dryer will stop working. There will be an audible click and the reset button will pop out.
- 3. To reset ALCI with a Reset button: Unplug unit. Then push Reset button in, and reinsert plug into outlet.
- 4. Be sure to repeat test every time you use this hair dryer to confirm the ALCI is operational.



OPERATING  
INSTRUCTIONS

T3 Featherweight 2

- 5. If ALCI is not functioning properly, return the hair dryer to a service center.
- 6. If a water immersion occurs, bring this unit into a service center. Do not try to reset.

Should the dryer go off and the Reset button pop out during use, this could indicate a malfunction in the dryer. Remove the plug from the outlet and allow the dryer to cool. Reset the ALCI. Reinsert the plug into the outlet. The dryer should function normally. If not, return it to a service center for examination and repair.



This Message About...

GROUND  
FAULT  
CIRCUIT  
INTERRUPTERS

... can save a life!

GROUND FAULT  
CIRCUIT INTERRUPTERS

If you must use your hair dryer in the bathroom, install a GFCI now!

Your local electrician can help you decide which type is best for you – a portable unit that plugs into the electrical outlet or permanent unit installed by your electrician. The National Electrical Code now requires GFCIs in the bathroom, garages and outdoor outlets of all new homes.

Why do you need a GFCI?



Electricity and water don't mix. If your hair dryer falls into water while the dryer is plugged in, the electric shock can kill you, **EVEN IF THE SWITCH IS "OFF".**

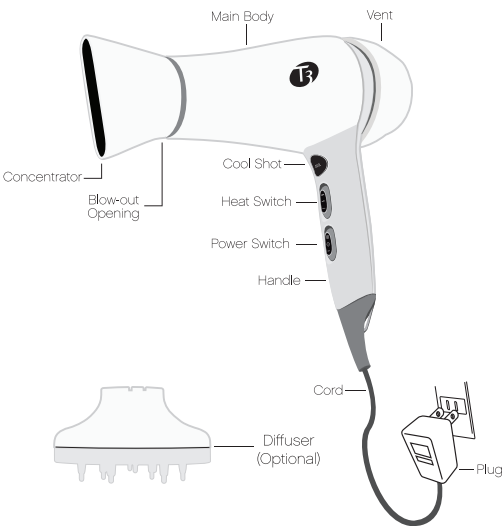
A regular fuse or circuit breaker won't protect you under these circumstances. A GFCI offers you far greater protection.

**A GFCI can save your life!  
Compared to that, the price is small!  
Don't wait...Install one now!**

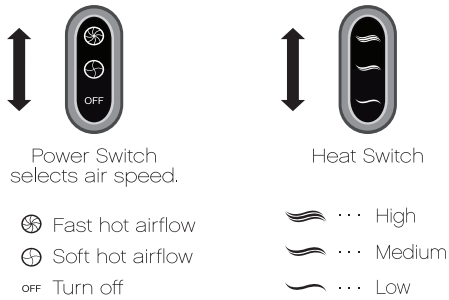
\* GFCI is a sensitive device which reacts immediately to a small electric current leak by stopping the electricity flow.

# OPERATING INSTRUCTIONS

T3 Featherweight 2



## HOW TO OPERATE

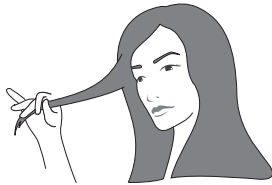


Professional Hair Dryer  
Model No. 73820  
Cool Shot

## HOW TO USE YOUR

T3 Featherweight 2

1 Divide hair into 3-4 inch sections. Hold a section two-thirds of the way down and pull taut.



2 Select the Power Switch to select desired heat and air speed. Aim the dryer downward over each section until it is 70-90% dry.



## HOW TO USE YOUR

T3 Featherweight 2

3 Using a round bristle brush, brush through each section part of the way down and hold it there very taut. Aim the dryer downward and follow the brush as it pulls all the way through. To smooth the ends, slip the brush underneath a section and blow over the curve.



4 To have a more polished effect, repeat step 3 with a comb. For best results, use a T3 Carbon Comb.



## HOW TO USE YOUR

T3 Featherweight 2

5 Finally, use the Cool Shot switch and blow hair all over with cold air to lock in the look.



# MAINTENANCE INSTRUCTIONS

T3 Featherweight 2

1. Make sure that the inlet and outlet grills are clear of dust and lint for proper operating performance.
2. Your hair dryer is virtually maintenance free. No lubrication is needed.
3. Always remove the plug from the outlet and allow the dryer to cool before cleaning.
4. Use a small brush or brush attachment of a vacuum cleaner to remove dust and lint that may have accumulated on the metal mesh at the back of the dryer.
5. The hair dryer exterior may be wiped clean with a damp cloth.
6. **CAUTION:** Never allow the power supply cord to be pulled, twisted or severely bent. Never wrap the cord tightly around the dryer. Damage will occur at the high flex point of entry into the hair dryer, causing it to rupture and short. Inspect the cord frequently for damage. Stop use immediately if damage is visible, if the unit stops or if it operates intermittently.
7. If the cord or hair dryer is damaged or does not operate properly, return it to a service center for repair.
8. This hair dryer has no user serviceable parts. Do not attempt to repair the appliance yourself.

## STORAGE

When not in use, your hair dryer should be disconnected and stored in a safe, dry location, out of reach of children. Do not wrap the cord around the dryer. Allow the cord to hang or lie loose and straight at the point of entry into the hair dryer.

## T3 WARRANTY TERMS & CONDITIONS

T3 Micro will repair or replace (at our option) T3 products for twenty-four (24) months from the date of purchase if they are defective in workmanship or materials. This warranty does not cover (1) damage due to misuse or abuse, such as incorrect voltage supply, dropping, or neglect in safety precautions; (2) tampering, such as repair or attempted repair. To obtain service under the warranty, please call 1.888.340.8880 or email us at [info@T3micro.com](mailto:info@T3micro.com) to obtain a Return Authorization Number as well as explicit instructions on how to return the defective product. You will be required to return the defective product with a proof of purchase, payment in the amount of \$14.95 to cover shipping and handling, and a brief description of the product's deficiencies. Please clearly mark the Return Authorization Number on the outer Packaging when sending us the defective item.

**THIS LIMITED WARRANTY IS ONLY VALID IF THE PRODUCT IS PURCHASED FROM AN AUTHORIZED SELLER OF T3 GOODS AND IF THE ORIGINAL SERIAL NUMBER ON THE PRODUCT HAS NOT BEEN REMOVED OR OTHERWISE TAMPERED WITH.**

Any implied warranties, obligations, or liabilities, including but not limited to the implied warranty of merchantability and fitness for a particular purpose, shall be limited in duration to the 24 month duration of this written limited warranty. Some states do not allow a limitation on how long an implied warranty lasts, so the above limitation may not apply to you.

Visit [www.T3micro.com/register](http://www.T3micro.com/register) to complete your warranty registration.

Become a fan and discover  
**The Science of Fabulous**

Receive information on new product releases, stylist tips and tricks, and other news from the behind the scenes world of T3.

[FACEBOOK.COM/T3MICRO](https://www.facebook.com/T3MICRO)

[YOUTUBE.COM/T3MICRO](https://www.youtube.com/T3MICRO)

[WWW.T3MICRO.COM](http://WWW.T3MICRO.COM)

MODEL NO. 73820, 73821,  
73822, 73823, 73824, 73825,  
73826, 73827, 73828, 73829

## SPECIFICATIONS

Operating Voltage: 125V  
Power Consumption: 15A

T3 Micro  
Gardena, CA USA  
EH12 5AY, UK  
Made in China

[WWW.T3MICRO.COM](http://WWW.T3MICRO.COM)

**WARNING**  
Do not use this appliance near water,  
in bathtubs, basins, or vessels.



UG-73820r